

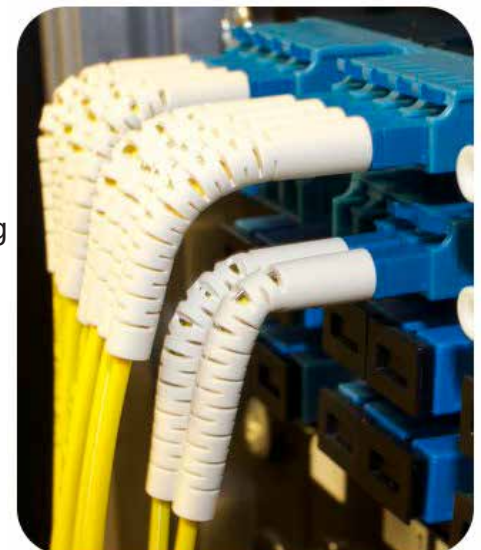
FLEXI BOOT FIBRE OPTIC PATCH LEADS



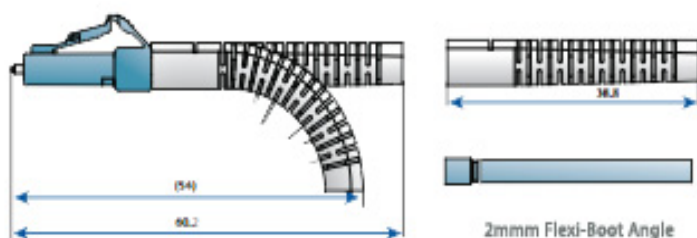
4Cabling's range of Flexi-Boot Fibre optic patch leads offer a unique approach to cable management. These specialised boots are designed to bend from closer to the connector and stay in the bent position by way of a specialised wire. This ingenious boot is used to keep fibre patch leads clean and organised and set back from rack doors and other external factors that can tap on a fibre lead until its ultimate destruction.

Our fibre optic patch leads are immune to EMI/RFI and are used to connect high speed and legacy networks. The patch leads are manufactured using LSZH cables which conform to IEC, EIA TIA and Telecordia standards.

- OM4 & OS1 fibre patch leads conform to ITU-651, TIA/EIA492AAAD
- Ultra Flexible with internal wire to set & forget the bend radius of installed patch leads
- 2mm Oversleeving
- Individually labelled for lead tracing
- Low smoke zero halogen (LSZH) cable
- Manufactured with stringent quality control
- OS1 Singlemode - yellow jacket zip cord multi-mode 9 / 125µm
- OM4 Multimode - aqua jacket zip cord multi-mode 50 / 125µm
- All leads are supplied with a factory test report
- All ends are polished and individually inspected for correct polishing
- Supports high speed multi-channel data, voice & video applications



OS1 Singlemode Patch Leads



Last edited: February 9, 2018 2:40 PM

FLEXI BOOT FIBRE OPTIC PATCH LEADS



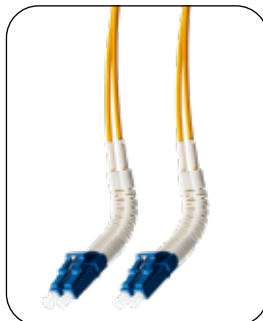
AVAILABLE TERMINATIONS:

- LC Flexi Boot - LC Flexi Boot
- LC Flexi Boot - SC Flexi Boot
- SC Flexi Boot - SC Flexi Boot



AVAILABLE MODES:

- OS1 Singlemode
- OM4 Multimode



AVAILABLE LENGTHS: 0.5m, 1m, 1.5m, 2m, 3m & 5m

	Core/Cladding Diameter (µm)	Fast Ethernet 100BASEFX	1 Gigabit 1000BASE-SX	1 Gigabit 1000BASE-LX	10 Gigabit 10GBASE	40 Gigabit 40GBASE	100 Gigabit 100GBASE
Multimode							
OM1	62.5/125	2000 Meters	275 Meters	550 Meters	33 Meters	N/A	
OM2	50/125		550 Meters		82 Meters		
OM3*		300 Meters	100 Meters	100 Meters			
OM4*		400 Meters	150 Meters	150 Meters			
Singlemode							
OS1	9/125	2000 Meters	5 km at 1310nm	5 km at 1310nm	10 km at 1310nm		

* Laser Optimised

Last edited: February 9, 2018 2:40 PM